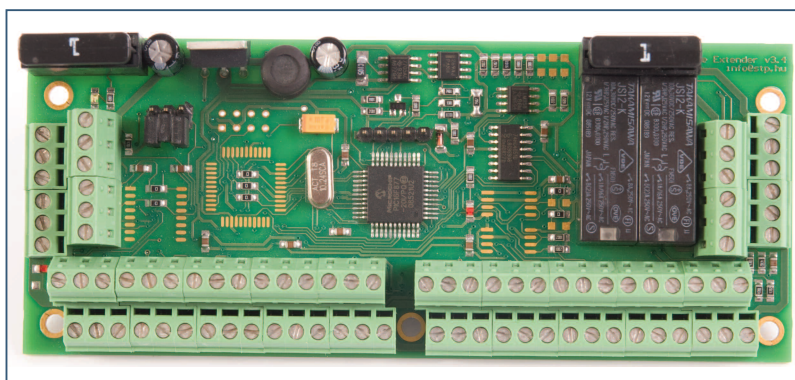


SZE02-08/16/32 ZONE EXPANDER

DATA SHEET



TECHNICAL SPECIFICATION

Description	Zone Expander for SComplex
Part number	SC-1R16, SC-2R16
Application	Burglar alarm system
Inputs	8/16/32 inputs 1K /2.2K /4.7K /5.1K /5.6K -- NC/NO/EOL/DEOL Software selectable for each inputs
Outputs	2 dedicated inputs for AC power and Battery status monitoring 2 relay max. 1A / 30V (NC, COM, NO no potential restriction) 4 OC max.0.5A /30V
Communication	SC-485 / max. 1200m / Cat5 cable
Power supply	STP enclosure with uninterruptible power supply (SH01-02)

MECHANICAL SPECIFICATION

Dimension	134 x 49 mm
Mounted height	38 mm (width spacer)

ELECTRICAL SPECIFICATION

Supply voltage nominal	+13.6V (10 - 15V)
Current consumption	Typical 50mA
Operating temperature	0 C - + 50C

